

Release Note for Vista Manager EX Software Version 3.12.x



» 3.12.0

Acknowledgments

©2024 Allied Telesis Inc. All rights reserved. No part of this publication may be reproduced without prior written permission from Allied Telesis, Inc.

Allied Telesis, Inc. reserves the right to make changes in specifications and other information contained in this document without prior written notice. The information provided herein is subject to change without notice. In no event shall Allied Telesis, Inc. be liable for any incidental, special, indirect, or consequential damages whatsoever, including but not limited to lost profits, arising out of or related to this manual or the information contained herein, even if Allied Telesis, Inc. has been advised of, known, or should have known, the possibility of such damages.

Allied Telesis, AlliedWare Plus, Allied Telesis Management Framework, EPSRing, SwitchBlade, VCStack and VCStack Plus are trademarks or registered trademarks in the United States and elsewhere of Allied Telesis, Inc. Adobe, Acrobat, and Reader are either registered trademarks or trademarks of Adobe Systems Incorporated in the United States and/or other countries. Additional brands, names and products mentioned herein may be trademarks of their respective companies.

Getting the most from this Release Note

To get the best from this release note, we recommend using Adobe Acrobat Reader version 8 or later. You can download Acrobat free from www.adobe.com/

| | |
|--|-----------|
| What's New in Vista Manager EX v3.12.0 | 4 |
| Important Considerations Before Upgrading | 13 |
| Obtaining User Documentation | 14 |
| Upgrading Vista Manager as a Windows-based installation | 15 |
| Upgrading Vista Manager on VST-APL | 25 |
| Upgrading Vista Manager on VST-VRT | 25 |
| Troubleshooting | 25 |

What's New in Vista Manager EX v3.12.0

Introduction

This release note describes the new features in Vista Manager EX™ v3.12.0. It covers Vista Manager EX plus the optional Autonomous Wave Controller (AWC) and SNMP plug-ins, and Allied Intent-based Orchestrator (AIO).

You can obtain the software files from the [Software Download area of the Allied Telesis website](#). Log in using your assigned email address and password.

Contact your authorized Allied Telesis support center to obtain licenses.



Caution: Information in this release note is subject to change without notice and does not represent a commitment on the part of Allied Telesis, Inc.

While every effort has been made to ensure that the information contained within this document and the features and changes described are accurate, Allied Telesis, Inc. can not accept any type of liability for errors in, or omissions arising from, the use of this information.

New Features and Enhancements

This section summarizes the new features and enhancements added to Vista Manager EX version 3.12.0.

It includes:

- “Custom rule actions available for Health Monitoring” on page 5.
- “Custom names for devices now supported” on page 7.
- “Vista Integration with Nozomi Networks” on page 7.
- “Health Monitoring now supports the TQ6702 GEN2-R (Wireless AP Router)” on page 8.
- “Device Discovery with TQ6702 GEN2-R (Wireless AP Router)” on page 8.
- “GUI Active on device without reboot required” on page 8.
- “New Edge Security Feature” on page 9.
- “Change to Device icons on the Network Map” on page 10.
- “AWC enhancements” on page 11.

Custom rule actions available for Health Monitoring

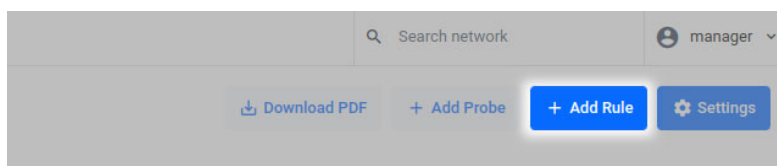
Applies to all Vista Manager EX installations with an AMF Plus License

From version 3.12.0 onwards, you can create custom rules for Health Monitoring from the Health Monitoring Dashboard. This feature allows you to set up actions, such as email notifications or alarms, when the Health Trend widgets on the Health Monitoring dashboard go red (bad).

Note that you must enable Health Monitoring Polling for all rules to work.

For rules that use Interface Counters as a metric, you must enable both Health Monitoring Polling, and Interface Counters.

Click **+ Add Rule** to add a new custom rule.



You can then input a name, select a metric, and select an action. You can add an additional action by clicking Add action + below the first Action (with a maximum of 2 total actions).

An action or event will be triggered if:

- The metric you specified has its Health Trend change from good to bad,
- or, if a device within that metric becomes bad from fair or good, and if it has not already been triggered for a given period of the metric being red.

When a metric goes green again, then devices fitting that metric have the ability to be triggered once the metric goes red again.

If you do not select an action, then no notification will be sent even if the conditions are met.

A screenshot of the 'Add Rule' dialog box. The dialog has a title bar with 'Add Rule' and a close button (X). It contains the following fields:

- Rule Name:** A text input field containing 'health_monitoring_rule'.
- Metric:** A dropdown menu with 'CPU Utilization' selected.
- Action 1:** A dropdown menu with 'No Action' selected.
- Below the Action 1 dropdown, there is a link: '- Remove action' and a link: 'Add action +'.
- At the bottom right, there are two buttons: 'Cancel' and 'Save'.

You can select from the following **Metrics**:

- CPU Utilization
- Memory Utilization
- Storage Utilization
- Temperature
- Traffic Health
- Interface Counters - Note that this must be enabled first in the Settings

The **Actions** you can set from include:

- Email Notification
- Dismissable Alarm
- No Action

You can dismiss the alarms manually.

Created rules are displayed on the Event page in Vista Manager, and you can edit existing rules from the Rules tab on the Events page.

The screenshot shows the 'Edit Rule' configuration page in the Vista Manager EX interface. The main area displays a table of rules with the following columns: Rule Name, Rule Type, Criteria, and Actions. A single rule is listed: 'health_monitoring_rule' with Rule Type 'Health Monitoring', Criteria 'Metric: CPU Utilization', and Actions 'Email' and 'Alarm'. The right-hand panel is titled 'Edit Rule' and contains the following fields:

- Rule Name: health_monitoring_rule
- Match Criteria: Metric: CPU Utilization
- Action 1: Email Notification
- Recipient group: Admin (1 user)
- Trigger Interval: 30 mins
- Action 2: Dismissable Alarm

At the bottom of the right panel, there are options to 'Remove action' (with a minus sign) and 'Add action' (with a plus sign). 'Cancel' and 'Save' buttons are located at the bottom right of the panel.

You cannot edit the Metric Criteria section from this page, so if you require a new metric to be tracked then create another rule.

Custom names for devices now supported

Applies to all Vista Manager EX installations

From version 3.12.0 onwards, you can rename devices from the Network Map and Asset Management page in Vista Manager.

To edit a device's name on the Asset Management page, click the three dots on the Action column next to the name of the device you wish to configure. This brings up a field where you can rename the device.

To edit a device's name on the Network map, click on the three dots next to the device's name on the left-hand menu. This brings up a field where you can rename the device.

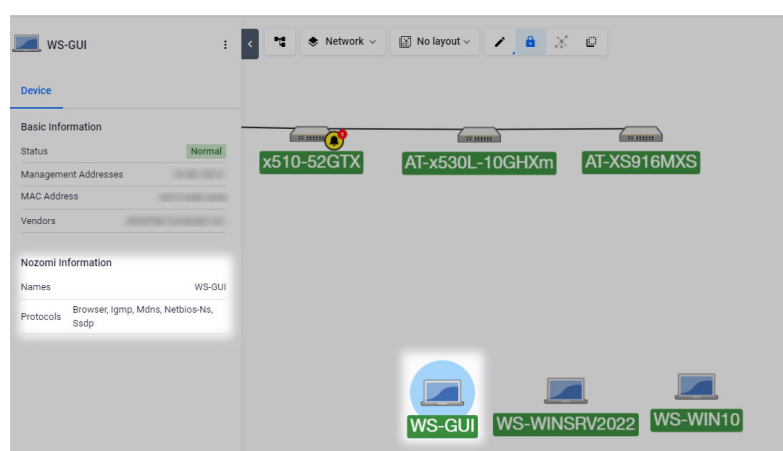
Note that the custom name does not overwrite the device's hostname.

Vista Integration with Nozomi Networks

Applies to all Vista Manager EX installations

From version 3.12.0 onwards, the Nozomi Plugin (Nozomi Networks) is now supported on Vista Manager. This means you can use the Nozomi Plugin to discover and classify devices on your network.

If you have an AMF network with AMF Device Discovery enabled, you can use Nozomi to add more information about devices into Vista Manager.



You can register the Nozomi Plugin by going to the **System Management > Plugins** page.

Click **+Add Plugin** on the Plugins table, and entering the following server URL in the Server URL field:

- `https://localhost:15443/`

To see information about how to configure the Nozomi Plugin, see the [Nozomi Plugin User Guide](#).

After you register the Nozomi Plugin, Vista Manager will discover devices using the plugin. The devices will then be displayed on the Network Map and Asset Management pages, and you can change any desired custom details.

When you remove or unregister the Nozomi Plugin, the devices discovered by Nozomi will be removed from the map.

Health Monitoring now supports the TQ6702 GEN2-R (Wireless AP Router)

Applies to all Vista Manager EX installations

From version 3.12.0 onwards, Health Monitoring now includes support for the TQ6702 GEN2-R (Wireless AP Router).

This means that you can view the TQ6702 GEN2-R's current health information from the Device Health tab, and the TQ6702 GEN2-R is now included as part of the Network Health information page.

This feature requires Alliedware Plus version 5.5.3-1.1 or later.

Device Discovery with TQ6702 GEN2-R (Wireless AP Router)

Applies to all Vista Manager EX installations

From version 3.12.0 onwards, you can discover end devices with the TQ6702 GEN2-R (Wireless AP Router) on Vista Manager EX.

This means that other end devices that are connected to the TQ6702 GEN2-R are found when polling using STOAT, and are added to the Network Map and Asset Management Devices table.

Client devices that are discovered with STOAT show a wireless link on the Network Map.

This feature requires Alliedware Plus version 5.5.4-0.1 or later

GUI Active on device without reboot required

Applies to all Vista Manager EX installations

From version 3.12.0 onwards, you can update a device's GUI without needing to reboot the device.

Instead of rebooting, you can upload the new GUI file by clicking the Update Device GUI button on the Asset Management page to update the Device GUI.

This feature requires VM3.12.0 or later, and Alliedware Plus version 5.5.0-1.0 or later.

New Edge Security Feature

Applies to all Vista Manager EX installations

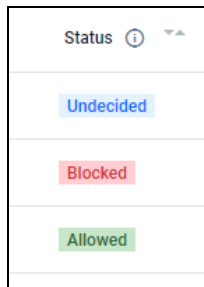
From version 3.12.0 onwards, you can use the new Edge Security feature to enhance the security of your network. Clients that are connected to devices on your network are displayed on the Endpoints table.

This is done through a new Endpoints table on the Asset Management page. This table allows you to either allow or block selected MAC addresses of end devices that are connected to your Local RADIUS server.

The Endpoints table shows the allowed or blocked status of client devices, and if they have been authenticated.

This feature frequently polls the network to keep the endpoint list up to date.

| MAC Address | RADIUS Username | RADIUS Server Hostname | NAS Hostname | NAS Port | Status | Authentication | Icon | Action |
|----------------|-------------------|------------------------|---------------|-----------|-----------|----------------|------|--------|
| e01a.ea71.5e12 | e0-1a-ea-71-5e-12 | R20-3050 | R21-3050_NAS | port1.0.3 | Blocked | | | |
| 001a.ebe9.ef00 | - | R20-3050 | SW31-xS30_NAS | port1.0.9 | Undecided | Authenticated | | |
| 001a.ebcb.2ee0 | - | R20-3050 | SW31-xS30_NAS | port1.0.4 | Undecided | Authenticated | | |
| 0011.0100.0014 | 00-11-01-00-00-14 | R20-3050 | R21-3050_NAS | port1.0.5 | Allowed | Authenticated | | |
| 0011.0100.0013 | - | R20-3050 | R21-3050_NAS | port1.0.5 | Undecided | | | |
| 0011.0100.0012 | - | R20-3050 | R21-3050_NAS | port1.0.5 | Undecided | | | |
| 0011.0100.0011 | - | R20-3050 | R21-3050_NAS | port1.0.5 | Undecided | Authenticated | | |
| 0011.0100.0010 | - | R20-3050 | R21-3050_NAS | port1.0.5 | Undecided | | | |
| 0011.0100.000f | - | R20-3050 | R21-3050_NAS | port1.0.5 | Undecided | Authenticated | | |
| 0011.0100.000e | - | R20-3050 | R21-3050_NAS | port1.0.5 | Undecided | | | |

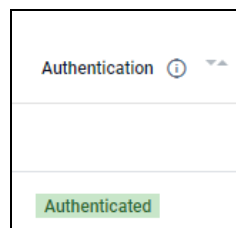


The **Status** column shows if a client has been allowed onto your network. If the status is listed as Undecided, then you have not made a decision on authentication yet.

You can choose from either:

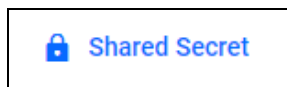
- **Blocked** - the device is blocked and is set to reject on the RADIUS user page
- **Allowed** - a RADIUS user exists to allow this endpoint on the network, and is not set to reject on the RADIUS user page.

To block or allow specific endpoints, navigate to the Endpoints section of the Asset Management menu, and select one or multiple devices you would like to configure.



The **Authentication** column shows if the device has been authenticated with the RADIUS server. If the device has been authenticated, it displays a green Authenticated badge.

If you enable promiscuous mode, client devices will be authenticated by default. If disabled, they will not be authenticated by default.



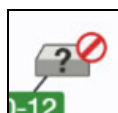
You must configure a **Shared Secret** from the **Network Services > RADIUS** page in order for Vista Manager to send requests to the NAS device.

The Shared Secret key is used by Vista Manager EX to send a CoA (Change of Authorization) message to the NAS device. For more information see the [Vista Manager EX User Guide](#).

You can assign a Shared Secret key to Vista Manager this by clicking the Shared Secret button in the top right. You must also configure the Shared Secret on the NAS device.

You must configure the Service-Type attribute in RADIUS authentication request and Dynamic Authorization Client (DAC) on the NAS device.

You can also alternatively view if a client is blocked on the local RADIUS server from the RADIUS page. If clients are blocked, they are noted with a Reject status. In addition, the Network Map includes a **Blocked** icon next to client devices that you have blocked from the Endpoints page.



This feature works on network environments where a single Alliedware Plus RADIUS server controls access to the whole environment, or a multi-tenant environment where isolated networks are controlled by single Alliedware Plus RADIUS servers.

It cannot work on environments that use a non-Alliedware Plus RADIUS server, or multiple RADIUS servers to control access to the same devices, in other words, overlap between networks controlled by different RADIUS servers.

Change to Device icons on the Network Map

Applies to all Vista Manager EX installations

From version 3.12.0 onwards, two changes have been added to Device icons on the Network Map:

- All devices now display an icon next to the device name on the Device Information side-panel on the Network Map.
- The edit device feature has now moved from a badge on the icon image, to the three dots next to the device name. Click the three dots to edit a device.



AWC enhancements

AWC supported on TQ6702 GEN2-R (Wireless AP Router)

Applies to TQ6702 GEN2-R on all Vista Manager EX installations, with partial combined support for the AWC plug-in and the device's CLI.

From version 3.12.0 onwards, AWC supports the TQ6702 GEN2-R Wireless AP Router. Alongside this, the new AP Profile type, Dual[11ax] GEN2-R, supports the TQ6702 GEN2-R. This means that AWC can automatically optimize TQ6702 GEN2-R wireless coverage, and you can view and monitor TQ6702 GEN2-R APs on the AWC heatmap.

Note that you cannot configure the TQ6702 GEN2-R from the AWC Plug-in. Instead, you must use the TQ6702 GEN2-R's command line interface (CLI) to configure it.

Alongside this:

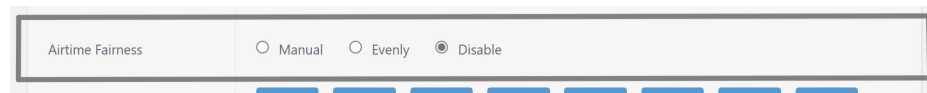
- When you assign an AP Profile to the TQ6702 GEN2-R via the CLI, and then assign an AP Profile through the AWC Plugin, the profile will display as Managed.
- Since the TQ6702 GEN2-R can get information from other APs, you can place APs on the AWC-Plugin's floormap to display the heatmaps (such as the Wireless Status View, Associated Client View, History Mode). To place APs on the floormap, the configuration on the AP Profile must match the configuration in the TQ6702 GEN2-R.

This feature requires firmware version 5.5.4-0.1.

Airtime Fairness feature added for TQ6000 GEN2 series

Applies to TQ6000 GEN2 series APs on all Vista Manager EX installations that have the AWC plug-in.

From version 3.12.0 onwards, changes have been made to the AP Profile settings for the Dual[11ax] GEN2, Tri[11ax] GEN2, and Tri[11ax] AP Profiles.



The range of the Airtime Fairness feature, which is found on the AP Profile Edit page, has been changed from Enable or Disable to Manual, Evenly, or Disabled.

It is disabled by default, however, if you previously set Airtime Fairness as Enabled in previous Vista Manager versions, then it will be automatically changed to Evenly.

The Pre-allocated Airtime Percentage feature has been added to the VAP (Multiple SSID) Configuration section of the AP Profile Edit page.

A screenshot of a configuration interface showing a text input field. The label 'Pre-allocated Airtime Percentage' is on the left. The input field contains the number '60' and is followed by a percentage sign '%'. The entire field is enclosed in a light gray border.

- You can set this percentage from a range of 0-100. It is set to 0 as default.
- Pre-allocated Airtime Percentage is only displayed when Airtime Fairness is set to Manual. This means if you set Airtime Fairness from Manual back to Evenly or Disable, then the integer you input for the percentage will be disregarded.

This feature requires the following firmware versions:

- TQ6602 GEN2, TQm6602 GEN2, TQ6702 GEN2, and TQm6702 GEN2: v8.0.3-0.1

Important Considerations Before Upgrading

This section describes changes that may affect Vista Manager EX or your network's behavior if you upgrade. Please read it carefully before upgrading.

Manual polling recommended if upgrading

Applies to all Vista Manager EX installations

From version 3.11.0 onwards, we recommend that you poll the network manually after upgrading Vista Manager EX.

This makes sure that Vista Manager EX acquires functionality that has been added in the new release, including functionality that depends on information from devices. Otherwise, features may fail to detect devices and will not work as intended.

To poll manually, use the **Refresh Topology** button on the Network Map:



Internet Explorer 11 compatibility

When using the Vista Manager EX integrated map with Internet Explorer 11, you may find performance to be slower, particularly with large maps. Therefore, we recommend using a different browser, especially if you have a large network.

Virtualization support

The Vista Manager EX virtual appliance is not supported on VMware vSphere Hypervisor (ESXi) 5.5. Please upgrade to VMware vSphere Hypervisor (ESXi) 6.0, 6.5, 6.7, 7, or 8 if you wish to use this version of Vista Manager EX.

Vista Manager plugins

Do **not** delete a plugin from Vista Manager during a version upgrade. No de-registering or re-registering of plugins is required during this stage.

Fibre monitoring feature permissions

Note that on a **new** installation of Vista Manager EX 3.11.0 you will need to enable Fibre monitoring permissions for users. This can be done on the User Management page.

Change to default value of RSSI Threshold for AWC Channel Blanket

Applies to TQ5403, TQ5403e, TQm5403, and TQ6602 APs

From version 3.9.0 onwards, when you create a new Channel Blanket profile, the default value for RSSI threshold is 30. Previously it was 0.

Note that if you restore a profile from backup and it uses the old default value of 0, the restored profile will continue to have a value of 0.

To configure a Channel Blanket profile, select **AWC Plug-in > Wireless Configuration > CB Profile** in the left-hand menu.

Disabling Internet Breakout disables all PBR rules

Internet Breakout uses policy-based routing (PBR) rules. When you use Vista Manager EX to disable Internet Breakout, it disables all PBR rules, including:

- rules created by SDWAN, and
- rules created by Internet Breakout, and
- rules created manually through the CLI.

Traffic map data not restored

When you upgrade Vista Manager EX, traffic map data from earlier versions will not be imported.

Obtaining User Documentation

Vista Manager documentation

Installation Guides, User Guides and Release Notes for Vista Manager EX are available on our website, alliedtelesis.com.

AMF Plus documentation

For full AlliedWare Plus documentation, see our online documentation library. For AMF Plus, the library includes the following documents:

- the [AMF Plus Feature Overview and Configuration Guide](#)
- the [AMF Plus Datasheet](#)
- the [AMF Plus Cloud Installation Guide](#).

Upgrading Vista Manager as a Windows-based installation

Windows-based Vista Manager has two optional plug-ins. These can be upgraded at the same time as Vista Manager EX.

Obtain the executable files

1. Download Vista Manager EX from the [Allied Telesis download center](#). If you are going to install the AWC and/or SNMP plug-ins then download these files from the same location.
 - The Vista Manager EX installation executable is named 'atvmexXXXbXXw.exe', with the Xs denoting the version and build numbers.
 - The AWC plug-in is called 'atawcXXXbXXw.exe'.
 - The SNMP plug-in is called 'atsnmpXXXbXXw.exe'.

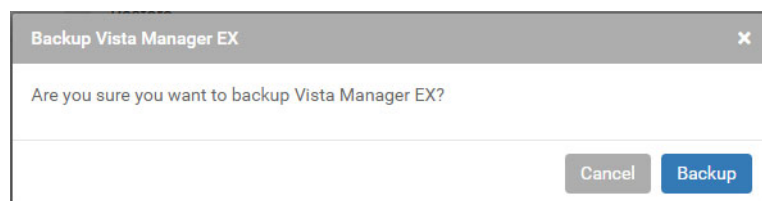
Do not rename these files. The installation requires them to be in this format.

2. Put the executables for Vista Manager and any plug-ins you wish to install in a single folder. This folder must be accessible from the machine you wish to install Vista Manager on.

Backup Vista Manager EX and the plug-ins

Backup Vista Manager EX

3. Log on to your Vista Manager EX and select the System Management page.
4. Click on the Backup button in the Database Management Pane.
5. Click Backup again to confirm you wish to make a backup.



This automatically downloads a **tar** file backup to your default download location.

Backup the SNMP plug-in

6. If you have the SNMP plug-in installed then log on locally to the Vista Manager EX server.
7. Stop the SNMP server services using the shortcut or by running the following command line.
"<Vista Install Path>\Plugins\AT-SNMP\NetManager\bin\svr cmd.bat" svrstop
8. Run the backup utility by using the shortcut or by running the following command line.

"<Vista Install Path>\Plugins\AT-SNMP\NetManager\bin\SMBackup.exe"

Follow the instructions on the screen.

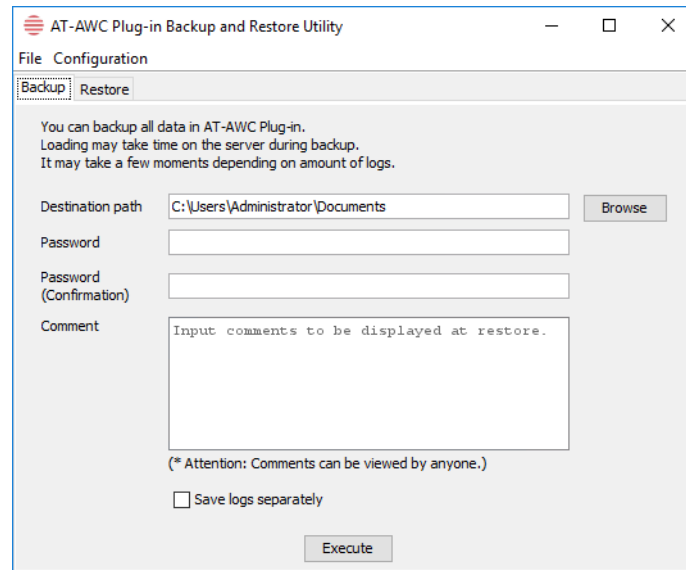
Backup the AWC plug-in

9. If you have the AWC plug-in installed then log on locally to the Vista Manager EX server.
10. Stop the AWC server services using the shortcut or by running the following command line.

"<Vista Install Path>\Plugins\AT-AWC\root\stopserver.bat"

11. Run the backup/restore utility by using the shortcut or running the following command line.

"<Vista Install Path>\Plugins\AT-AWC\tools\maintenance\maintenance.bat"



12. Select the backup tab and follow the instructions on the screen.

Note: The default location of <Vista Install Path> is **C:\Program Files (x86)\Allied Telesis\AT-Vista Manager EX**

Uninstall the existing version

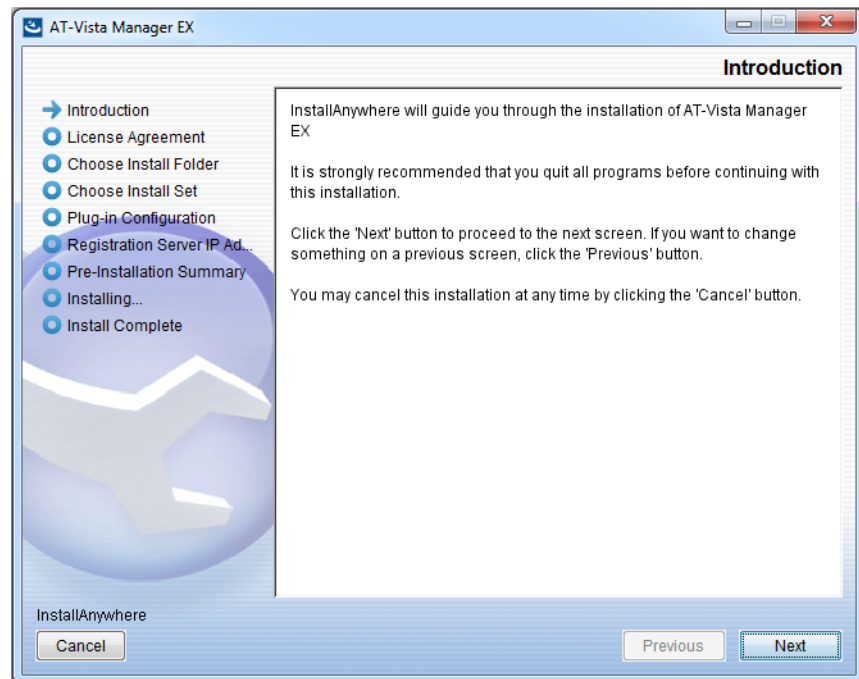
13. Log on as the same user as when installing.
14. Stop the server. Select **AT-Vista Manager EX** and then **AT-Vista Manager EX - Stop Server** from the Windows menu.
15. From the Windows menu, select **AT-Vista Manager EX** then **AT-Vista Manager EX - Uninstall**.
16. The AT-Vista Manager EX uninstaller starts.
17. Click the **Uninstall** button to uninstall.
18. If a dialogue box prompting you to restart the system is displayed, select **Restart the system** or **Restart later** and click the **Finish** button.
19. Delete the installation folder. The default installation folder is:
C:\Program Files (x86)\Allied Telesis\AT-Vista Manager EX
20. Reboot the system.

Install the new version

21. Execute the Vista Manager EX installation program 'atvmexXXXbXXw.exe'.

Note: You must have administrator privileges to run the installer.

22. The **Introduction** dialog displays:



This wizard will guide you through the installation of the latest version of Vista Manager EX. Click **Next**.

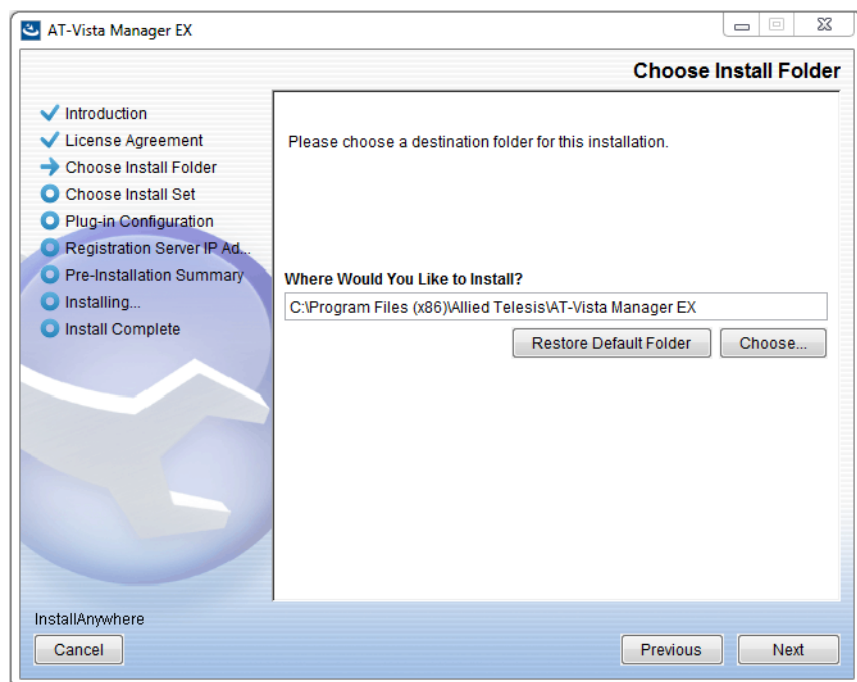
23. The **License Agreement** dialog displays:



Read the software license agreement terms and conditions. If you agree to accept the terms of the license agreement:

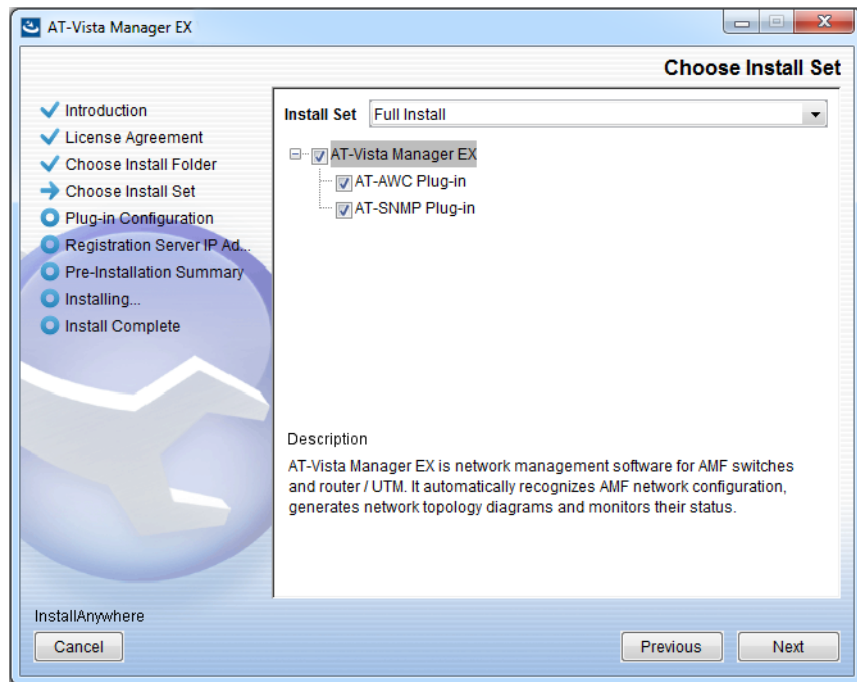
- Click **I accept the terms of the License Agreement**
- Click **Next**

24. The **Choose Install Folder** dialog displays:



Select a destination location and click **Next**.

25. The **Choose Install Set** dialog displays:



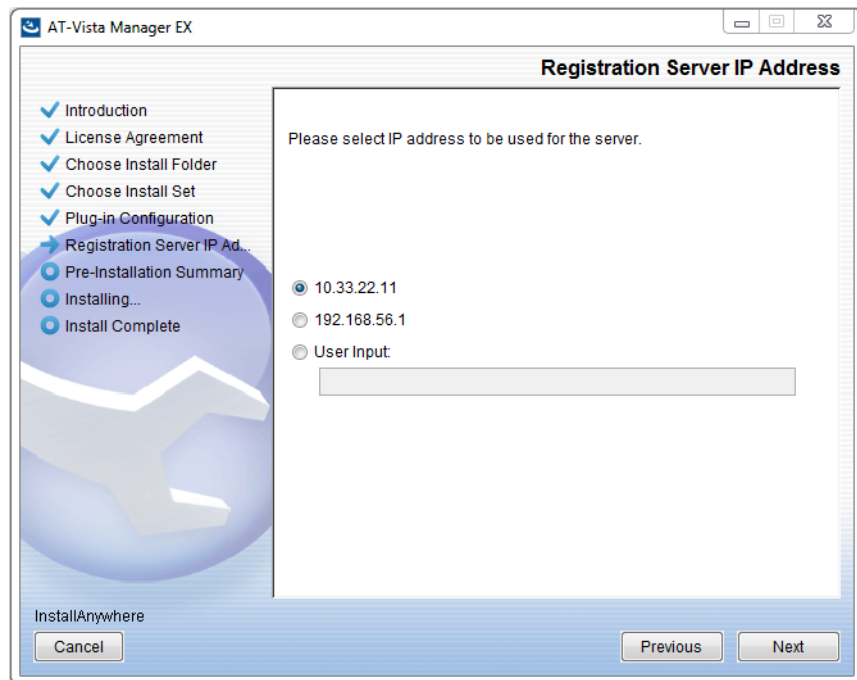
Select **Full Install** from the drop down list. By default all plug-ins are selected. Clear the check box for any plug-ins you do not wish to install. Click **Next**.

26. The **Plug-In Configuration** dialog displays:



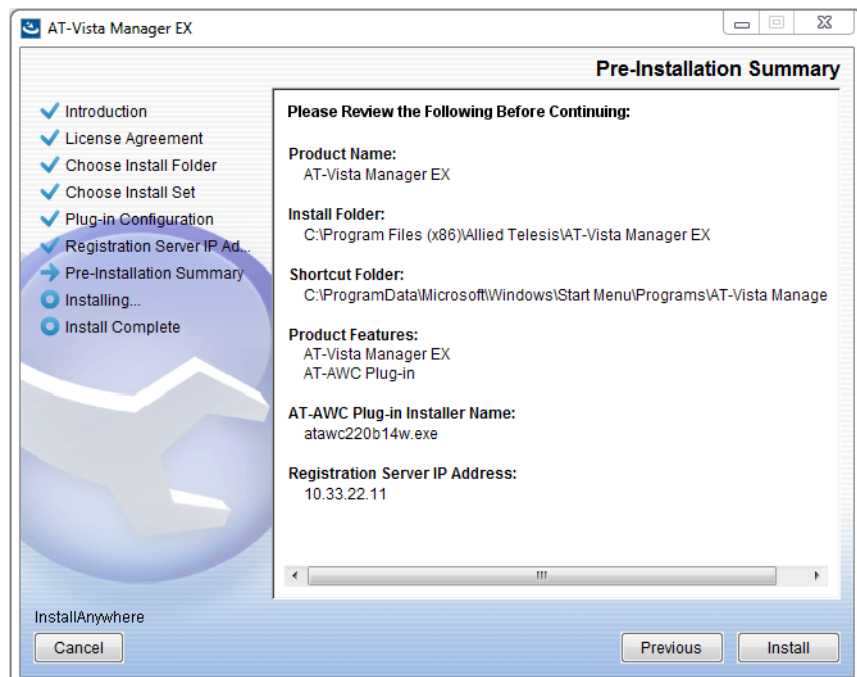
Select **Do not create a public key** unless you are intending to use the plug-ins in standalone mode. For more information on standalone mode, refer to the Installation Guide. Click **Next**.

27. The **Registration Server IP Address** dialog displays:



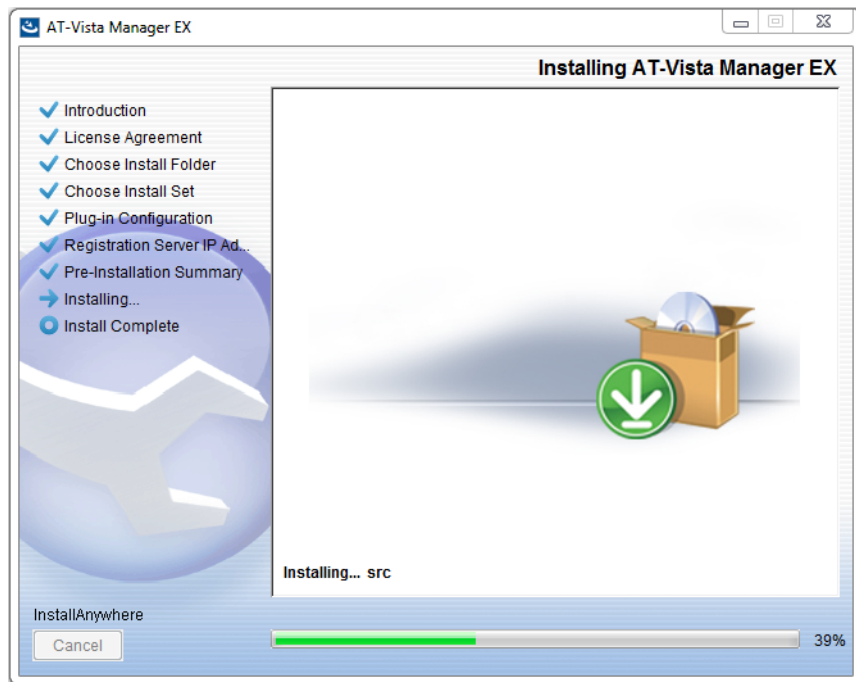
Either select from the list of IP addresses already configured on the Windows machine, or input a valid IP address. Click **Next**.

28. The **Pre-Installation Summary** dialog displays:

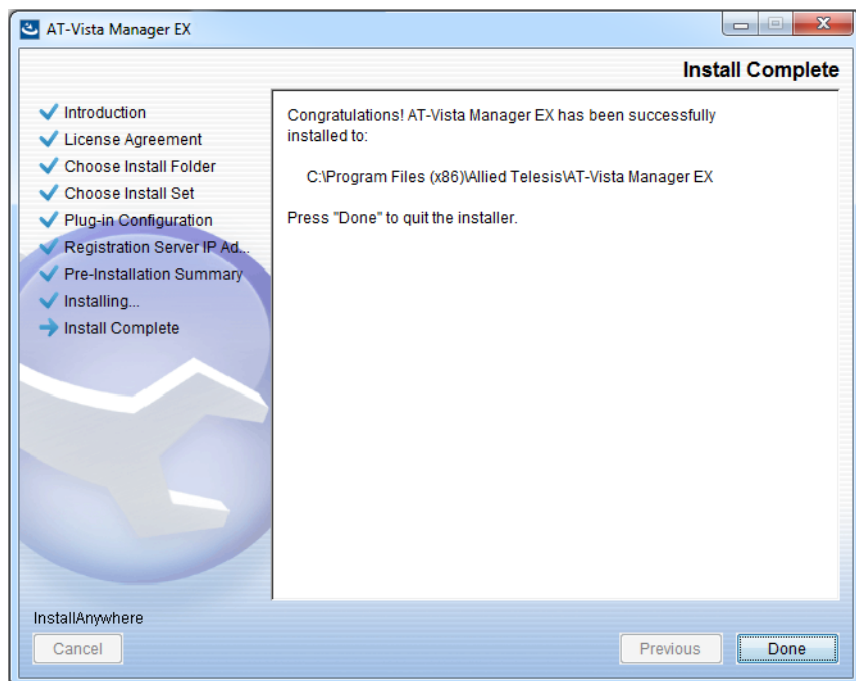


Check that your Product Name, Install Folder, Shortcut Folder, Product Features, Plug-in Installer Name and Registration IP Address are correct, and then click **Install**.

29. The **Installing...** dialog displays:



30. Once the installation is complete you will see the **Install Complete** dialog:

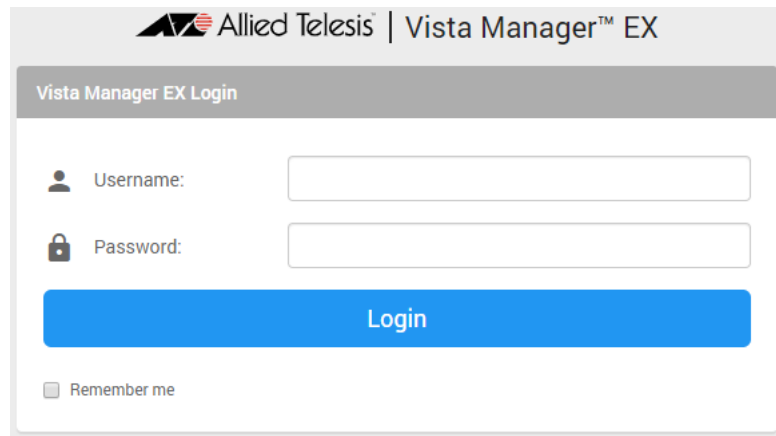


Check that the installation has completed successfully and click **Done**.

Restore the Vista Manager database

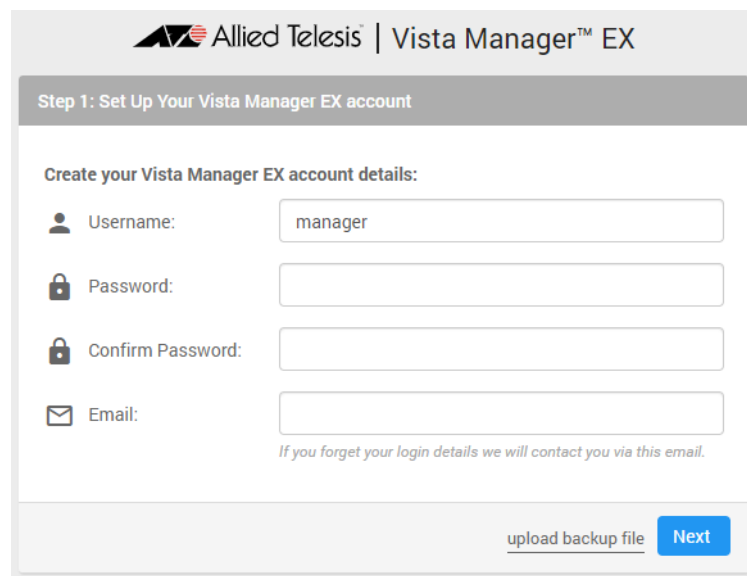
After the upgrade is complete, you need to restore the Vista Manager database. To do this, use the following procedure.

31. Login to Vista Manager.



Enter the **Username** manager and the **Password** friend. Click Login.

32. Click on upload backup file.

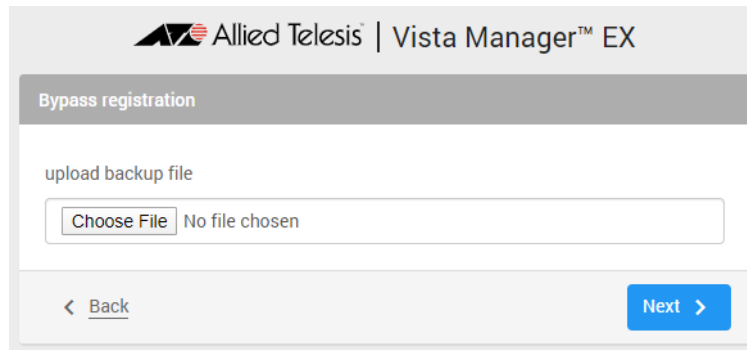


Caution Your serial number and license information are part of your database backup. If you upload the backup file when upgrading, you will keep the same serial number, and your licensing will continue to work without interruption.

However, if you configure a new instance of Vista Manager EX, without uploading your backup, a new serial number will be generated, and your existing licensing will no longer work. You will need to contact Allied Telesis support to generate a new license.

Therefore, it is **STRONGLY** recommended that you upload your database backup to ensure your licensing keeps working.

33. Select the database backup to upload. Click on Choose File, and browse to your Vista Manager database backup. Click Next. The Vista Manager database will be restored.



Restore the SNMP plug-in

34. If you have the SNMP plug-in installed then log on locally to the Vista Manager EX server.
35. Stop the SNMP server services using the shortcut or by running the following command line.

```
"<Vista Install Path>\Plugins\AT-SNMP\NetManager\bin\svrcmd.bat" svrstop
```

36. Run the restore utility by using the shortcut or by running the following command line.

```
"<Vista Install Path>\Plugins\AT-SNMP\NetManager\bin\SMRestore.exe"
```

Follow the instructions on the screen.

Restore the AWC plug-in

37. If you have the AWC plug-in installed then log on locally to the Vista Manager EX server.
38. Stop the AWC server services using the shortcut or by running the following command line.

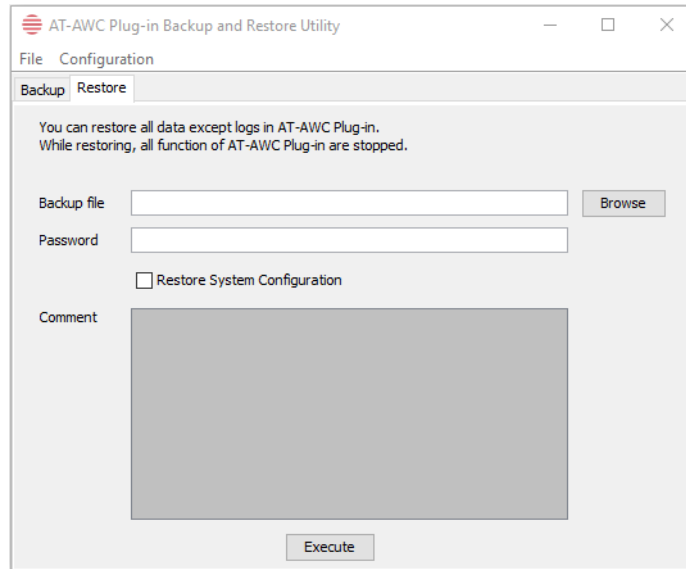
```
"<Vista Install Path>\Plugins\AT-AWC\root\stopserver.bat"
```

39. Run the backup/restore utility by using the shortcut or running the following command line.

```
"<Vista Install Path>\Plugins\AT-AWC\tools\maintenance\maintenance.bat"
```

40. Select the restore tab on the dialog and follow the instructions on the screen.

Note: By default, restoring the AWC database will not restore the system configuration. You can restore the system configuration by checking the Restore System Configuration checkbox in the backup/restore utility.



We recommend that you check the Restore System Configuration checkbox, as it will allow you to restore the following system configuration settings:

- Database Settings
 - « Maximum Memory Usage
- Data Retention Period Settings
 - « Associated Client History
 - « Client Location Estimation History
 - « IDS Report History
- Network Map Settings
 - « Wireless Client Update-Interval
- Client Location Estimation History data

The system configuration contains settings that are tailored to the machine that created the backup. If you are restoring the backup on a different machine, particularly if that machine has a lower specification, it is recommended not to restore the system configuration.

Note: The default location of <Vista Install Path> is **C:\Program Files (x86)\Allied Telesis\AT-Vista Manager EX**

Upgrading Vista Manager on VST-APL

See the [Vista Manager Network Appliance \(VST-APL\) Release Note](#).

Upgrading Vista Manager on VST-VRT

See the [Vista Manager Virtual \(VST-VRT\) Release Note](#).

Troubleshooting

See the Troubleshooting chapter in the [Vista Manager EX User Guide](#).