

Training Courses



Whether you are a field technician, a design engineer, a reseller or a network administrator, the Allied Telesis certification program has coursework that suits your needs.

Our courses cover all aspects of hardware and software deployments, from basic rack and stack to in-depth configuration, design and troubleshooting. Our instructors don't just tell you what to do—they teach you the theory behind configuration tasks, guide you in trying the configurations yourself, and make sure you have the skills to troubleshoot any issues.



View our [course calendar](#) and register

The Allied Telesis Training and Certification Model



Level 1
Allied Telesis Certified
Technician



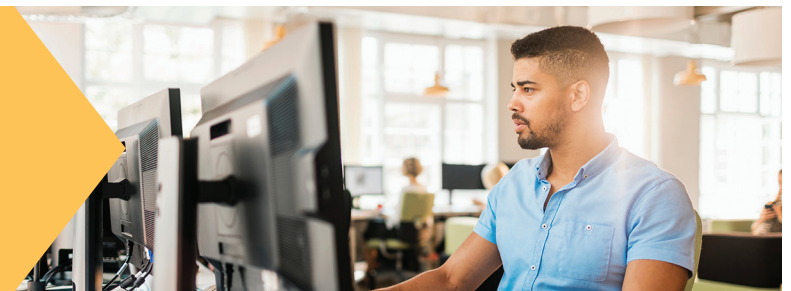
Level 2
Allied Telesis Certified
Professional



Level 3
Allied Telesis Certified
Expert

Introduction to Networking

(CAT/ENT)



Level 1
Certified Allied Telesis Technician (CAT)
Duration: 2 days

This course is for technicians who want to become skilled at installing and configuring Allied Telesis edge switches. Once completed, you will be able to:

- Describe the differences between Layer 2 and Layer 3 switches
- Understand how to split networks into edge and core sections
- Deploy Layer 2 or Layer 3 switches in a basic network design
- Understand and use basic switching features
- Use the CLI and GUI to configure switches.

Topics: VLANs, including trunks and private VLANs; RSTP; link aggregation; IP addresses; Stacking for resilience; Power over Ethernet; SNMP

Prerequisite: Good theoretical knowledge of basic networking concepts.

Wireless

(CAT/WiFi)



Level 1

**Certified
Allied Telesis
Technician (CAT)**

Duration: 2 days

This course is for technicians who want to work with Allied Telesis wireless products. Once completed, you will be able to:

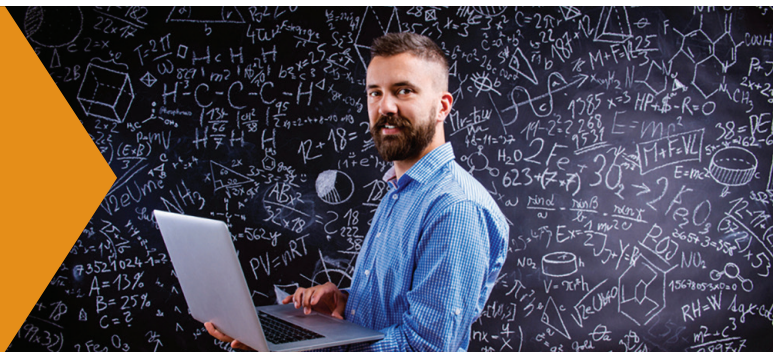
- Understand Wi-Fi technology
- Deploy Allied Telesis access points in a range of scenarios
- Use our innovative Vista Manager mini wireless manager to automatically optimize Wi-Fi coverage

Topics: Wi-Fi theory, 802.11 standards, security, attenuation, Vista Manager mini

Prerequisite: Knowledge of basic wired networking concepts

Advanced Networking for Enterprise Solutions

(CAP/ENT)



Level 2

**Certified
Allied Telesis
Professional (CAP)**

Duration: 3 days

This course provides a more advanced and in-depth knowledge of installation, configuration and troubleshooting Allied Telesis enterprise network solution products (supporting AlliedWare Plus™ OS). Once completed, you will be able to:

- Identify the key products used in enterprises
- Apply design rules to appropriately scale solutions
- Do essential system management
- Understand and use advanced features such as resiliency, security, traffic control, and application support.

Topics: Advanced STP; Advanced VLANs including nested VLANs; EPSRing for resilience; Access Control Lists; AMF for automation; LLDP; IP routing, including RIP, VRRP, and single-area OSPF

Prerequisite: **Introduction to Networking**

Autonomous Network Management with AMF

(CAE-AMF/ENT)



Level 3

**Certified
Allied Telesis
Expert (CAE)**

Duration: 2 days

Save time and reduce risk by automating and centralizing your network management. This course teaches you how to design, install and use the Allied Telesis Autonomous Management Framework. Once completed, you will be able to:

- Make configuration changes to an entire network in one step from any single device
- Back up configuration and firmware files automatically and regularly
- Use those backups to automatically provision new devices and recover failed devices
- Upgrade your whole network in a single step.

Topics: Autonomous Management Framework (AMF), including Centralized Management, Auto-Backup, Auto-Upgrade, Auto-Provisioning, & Auto-Recovery

Prerequisite: **Introduction to Networking** and **Advanced Networking for Enterprise Solutions**

Cybersecurity with Core Switches

(CAE-S/ENT)



Level 3

**Certified
Allied Telesis
Expert (CAE)**

Duration: 2 days

Keep your enterprise safe from cybersecurity threats. This course teaches you how to design, install, configure and troubleshoot advanced security on Layer 3 core switches. Once completed, you will be able to select and use appropriate technologies to achieve secure network access control.

Topics: RADIUS servers; IEEE 802.1x port security; MAC-based port security; web authentication; DHCP Snooping

Prerequisite: **Introduction to Networking** and **Advanced Networking for Enterprise Solutions**



Our training courses run continuously in locations worldwide.
[Check the calendar](#) for a course near you.

Multicast for Streaming Services

(CAE-M/ENT)



Level 3

**Certified
Allied Telesis
Expert (CAE)**

Duration: 2 days

Stream video and audio to the correct audience while minimizing network load. This course teaches you how to design, install, configure and troubleshoot multicasting on Layer 2 and Layer 3 core switches. Once completed, you will be able to:

- Design an end-to-end multicast solution with different Allied Telesis enterprise products
- Select and use appropriate Layer 2 and Layer 3 multicast technologies and protocols.

Topics: IGMP snooping; IGMP Query; PIM Sparse Mode; PIM Dense Mode; Source-Specific Multicast

Prerequisite: **Introduction to Networking** and **Advanced Networking for Enterprise Solutions**

Quality of Service

(CAE-QoS/ENT)



Level 3

**Certified
Allied Telesis
Expert (CAE)**

Duration: 2 days

Make sure your key applications have the bandwidth they need. This course teaches you how to design, install and configure advanced Quality of Service (QoS) on Allied Telesis Layer 2 and Layer 3 core switches. Once completed, you will be able to prioritize applications appropriately and allocate the necessary bandwidth to each different category of traffic.

- Design an end-to-end multicast solution with different Allied Telesis enterprise products
- Select and use appropriate Layer 2 and Layer 3 multicast technologies and protocols.

Topics: VLAN tag priority and DSCP for classification; traffic scheduling; strict priority and round-robin queuing; 3-color meters and RED curves for policing and shaping traffic

Prerequisite: **Introduction to Networking** and **Advanced Networking for Enterprise Solutions**



We can also offer training courses customized to your specific needs. [Contact Sales](#) to discuss your requirements.

TAKE ADVANTAGE OF OUR OTHER SERVICES

Our portfolio of services delivers a full range of cost-effective business solutions that optimize your IT infrastructure for maximum performance and the best experience for your customers.



Support Services

Services to ensure your business continuity.



Hosted Services

Use our managed platforms to run your business IT.



Advisory Services

We're here to help you and keep your business running.



Implementation Services

Use our expertise to get your IT project operational fast.



Managed Services

We'll manage your network to ensure maximum performance.