

Seamless Access to Online Systems for Medical College Hospital

Japan East West Medical College Hospital gets non-stop access to diagnostics, patient care, and other online systems.

Customer: Japan East West Medical College Hospital

Industry: Healthcare

Location: Dhaka, Bangladesh

Website: www.jewmch.com



Allied Telesis was extremely helpful with all the details of our requirements, the quotation, proposal comparison, and the solution design. The new network is working flawlessly without any issues.

Mr. Kono Futoshi

Director, SHIP Aichi Medical Service Ltd.

The customer

Japan East West Medical College Hospital (JEWCH) in Dhaka, Bangladesh, provides teaching facilities for tomorrow's healthcare professionals with the latest medical equipment, facilities such as modular operating theaters, and radiology equipment including MRI, CT, angiogram, and automated laboratories. In addition, the 650-bed hospital offers international-standard healthcare services across a wide range of specialities.

SHIP Aichi Medical Services, the owner of JEWCH, wanted to improve healthcare in Bangladesh by providing a hospital of international standard that would prioritize superior services and reasonable treatment costs. JEWCH would also provide 1,000 new jobs for healthcare workers, including around 100 doctors and 500 nurses.

To support the new medical college hospital, SHIP Aichi needed a new network that would:

- Improve access to online diagnostic imaging and other hospital systems
- Provide stable Wi-Fi for both doctors and patients
- Simplify and reduce network administration for IT staff

Providing seamless access to online systems

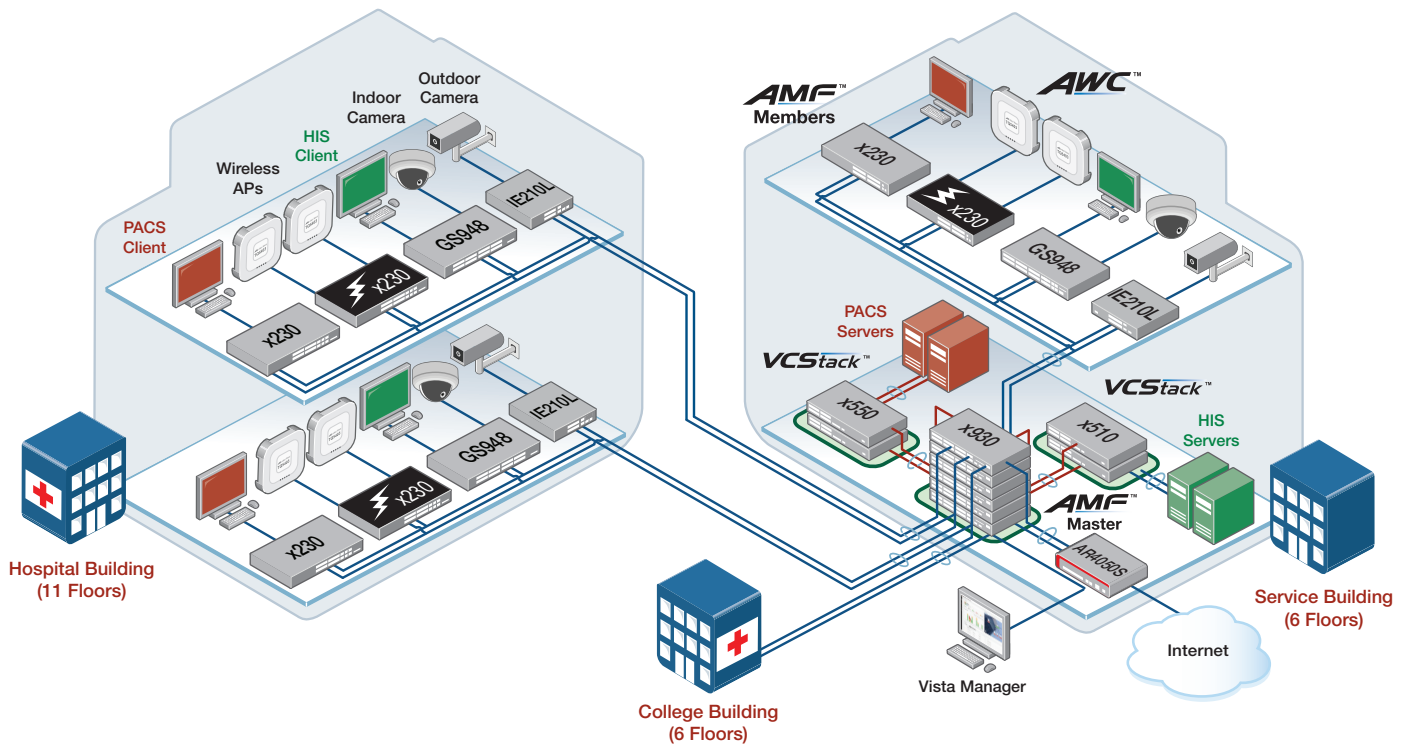
Always-on access to diagnostic imaging and patient and medical information is critical in modern healthcare environments to ensure the best possible treatment outcomes.

Success Story | Japan East West Medical College Hospital (JEWCMH)

To support the Picture Archiving Communication System (PACS) and Health Information System (HIS), Allied Telesis designed a brand-new network for JEWCMH. This new network provides a resilient solution that maximizes access to the PACs and HIS servers, and eliminates downtime by using Virtual Chassis Stacking (VCStack™) for network core and server switches—where multiple devices act as a single virtual chassis. From a configuration and management point of view, administrators enjoy a seamless experience managing connectivity and network features across all stacked devices. VCStack provides a highly available system where network resources are spread out across stacked units, reducing the impact for JEWCMH if one of the units fails. In addition, aggregating switch ports on different units across the stack provides excellent network resiliency, so the hospital can be confident of continual access to all online resources and applications.

Allied Telesis edge switches connect client devices, security cameras, and wireless Access Points (APs).

JEWCMH: A Resilient Solution



Allied Telesis wireless network solutions: optimized connectivity

Allied Telesis Autonomous Wave Control (AWC) automatically optimizes the WLAN network to maximize throughput and reduce interference, so both staff and patients enjoy excellent Wi-Fi performance, no matter where they are.

AWC is an advanced Wi-Fi management tool that utilizes Artificial Intelligence (AI) to deliver significant improvements in wireless network connectivity and performance while reducing deployment and operating costs. "By automatically analyzing wireless performance, AWC reduces coverage gaps and AP interference for a high-quality Wi-Fi experience that responds to the way our hospital staff access medical systems from the various buildings with their wireless devices," says Mr. Farhan Chowdhury Hossain, Senior System Engineer, IT, SHIP Aichi Medical Service Ltd.

Autonomous networking brings simple management

Simplified administration for IT staff is powered by Allied Telesis Autonomous Management Framework™ (AMF), providing network automation and zero-touch management. Vista Manager EX provides a single-pane-of-glass view of the entire AMF wired and AWC wireless networks, with powerful features that enable proactive network management.

Success Story | Japan East West Medical College Hospital (JEWCMCH)

The new solution not only meets all JECMCH's requirements—it also supports proactive medical training and patient care, both now and well into the future.



We look forward to working with Allied Telesis again on new HIS and PACS projects, as our collaboration enables seamless diagnostic solutions that support hospitals in providing the best possible healthcare.

Mr. Farhan Chowdhury Hossain

Senior System Engineer, IT, SHIP Aichi Medical Service Ltd.

About Allied Telesis

For more than 30 years, Allied Telesis has been delivering reliable, intelligent connectivity for everything from enterprise organizations to complex, critical infrastructure projects around the globe.

In a world moving toward Smart Cities and the Internet of Things, networks must evolve rapidly to meet new challenges. Allied Telesis smart technologies, such as Allied Telesis Autonomous Management Framework™ (AMF) and Enterprise SDN, ensure that network evolution can keep pace, and deliver efficient and secure solutions for people, organizations, and “things”—both now and into the future.

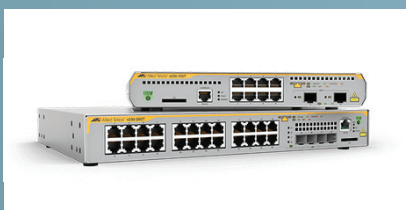
Allied Telesis is recognized for innovating the way in which services and applications are delivered and managed, resulting in increased value and lower operating costs.

Visit us online at alliedtelesis.com

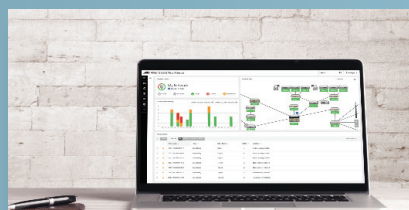
Related



Autonomous Wave Control (AWC)



x230 Series



Vista Manager EX